

CHARITY LUTHERAN CHURCH COVID-19 YOUTH & CHILDREN'S RE-OPENING PLAN

TABLE OF CONTENTS

General Information for All Youth & Children	2
Schedule Changes	4
Traffic Flow Maps	5
Children's Ministry Procedures	7
Youth Ministry Procedures	9

CHARITY LUTHERAN CHURCH

COVID-19 YOUTH & CHILDREN'S RE-OPENING PLAN

GENERAL INFORMATION

Our goal at Charity is to provide a safe environment for our children and families to worship together, learn God's teachings, and grow strong relationships with Christ. In order to accomplish that goal, we have made some modifications to children's and youth ministry at this time that will be implemented until further notice.

Registration is mandatory for all students in nursery - high school. Due to restrictions, we are requiring registration in order to accurately plan for classrooms, recruit volunteers, and keep everyone as safe as possible.

We ask that families register for ONLY the service they plan on attending, as we will have limited spaces each hour to maintain social distancing. If a student is registered for a class, but is absent for three weeks without reaching out to their area's director their spot may be given to a child on a waiting list. If you are aware ahead of time that you will be gone, please let your director know.

Registration this year will include an online option for all age levels. For this option, students will be able to view a virtual lesson and may receive additional supplies or activities depending on age group. Pre-registration is vital here as well. Directors may be mailing or hand delivering supplies to families who opt-in to this option.

You are welcome to opt-in to the online option at any time. Please notify your area director(s) if you wish to do so.

There will be weekly updates on Tuesday afternoons regarding programming for the upcoming Wednesday and Sunday. The update will be on our main Facebook page and will also be e-mailed to all families along with a text reminder.

Kids and students who are registered for in-person classes will automatically be added to the online registration list in the event of a full closure.

Online small groups will have their first Google Meet at 7 PM on Rally Wednesday (9/16). Some groups may choose a different time to meet thereafter if they choose to do so.

Masks will be encouraged, but not required. Mask-wearing will be at each person or family's discretion.

Please use the restroom before arriving for classes. Especially in the preschool and elementary areas, we would like to limit bathroom breaks as much as possible.

Your students are welcome to bring a water bottle or sippy cup of water to class. If you do not wish for your child to use the community drinking fountain, please make sure they have a water bottle with them.

CHARITY LUTHERAN CHURCH

COVID-19 YOUTH & CHILDREN'S RE-OPENING PLAN

Bring your own Bibles. Bibles are difficult to sanitize in community use, so we ask that all students in elementary, middle school, and high school bring their own Bibles.

Be mindful of the new traffic flow signage and one-way staircases. All stairwells are one-way traffic only. Particularly in the children's wing, pay attention to directional signage. More details in the child check-in/check-out procedures. **It is important that Middle and High school students follow these signs and traffic flows. Please encourage them to do so. (See maps below.)**

If a child/student or an immediate family member has any signs of illness, we ask that they refrain from coming to Charity until they are well again. Please self-screen before coming to church.

Reasons to stay home include cough, sore throat, runny or stuffy nose, fever, vomiting, diarrhea, etc.

If a child becomes ill, or their leader determines they are not feeling well, parents will be contacted and asked to pick their child up early.

If a church member or guest has tested positive for COVID-19 or been in close proximity with someone else who has tested positive, Charity will follow the protocols provided by the NDDoH.

Please be aware that all of these plans are subject to change with little to no notice. We are working hard to ensure we are following COVID-19 best practices and thus may have to make changes as we move forward.

CHARITY LUTHERAN CHURCH

COVID-19 YOUTH & CHILDREN'S RE-OPENING PLAN

SCHEDULE CHANGES: SUNDAYS

Services will be held at 9 AM and 10:45 AM. (No 8 AM service.) Nursery, preschool, and elementary programming will occur at both services. Doors to the children's area will open 15 minutes prior to the start of service.

SCHEDULE CHANGES: WOW

Nursery/Elementary/Preschool

- 6:15 - 7:15 WOW Kids Classes (doors open 15 minutes prior to class start)
- 6:15 - 7:15 WOW Service (20 Minutes of Middle School, 40 Minutes of Adult/Parent)

Middle School

- 6:00 - 6:15 Interactive Gathering Time (Sanctuary)
- 6:15 - 6:35 Middle School Service
- 6:35 - 6:55 20 Minute Rotation (Teaching/Practical Application/Activity or Game)
- 6:55 - 7:15 20 Minute Rotation (Teaching/Practical Application/Activity or Game)
- 7:15 - 7:35 20 Minute Rotation (Teaching/Practical Application/Activity or Game)
- 7:35 - 8:00 Small Groups

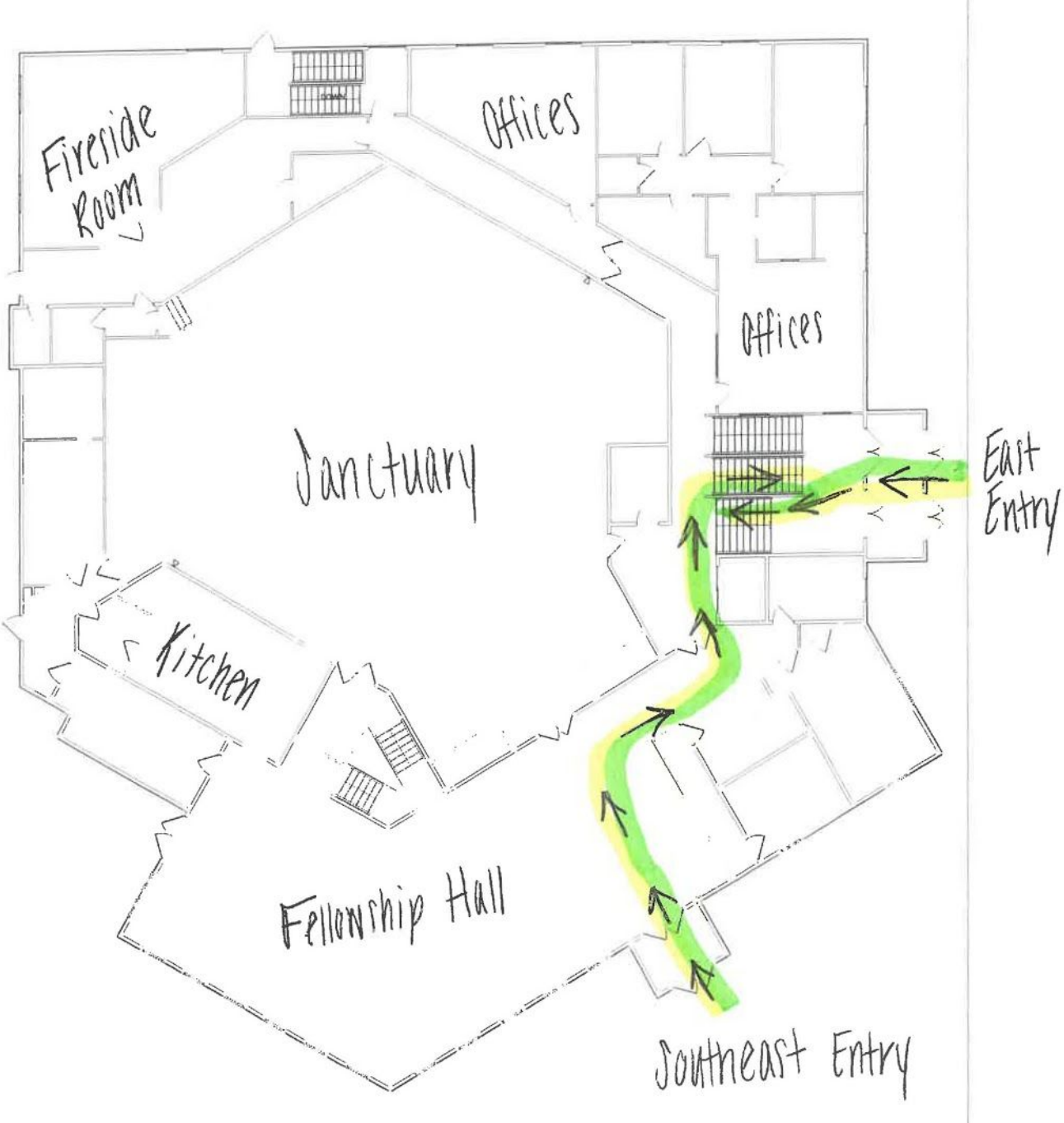
High School

- 7:45 - 9:30 High School Programming

At this time, the WOW meal is not being served. This will be re-evaluated in 4-6 weeks and any changes will be communicated as decisions are made.

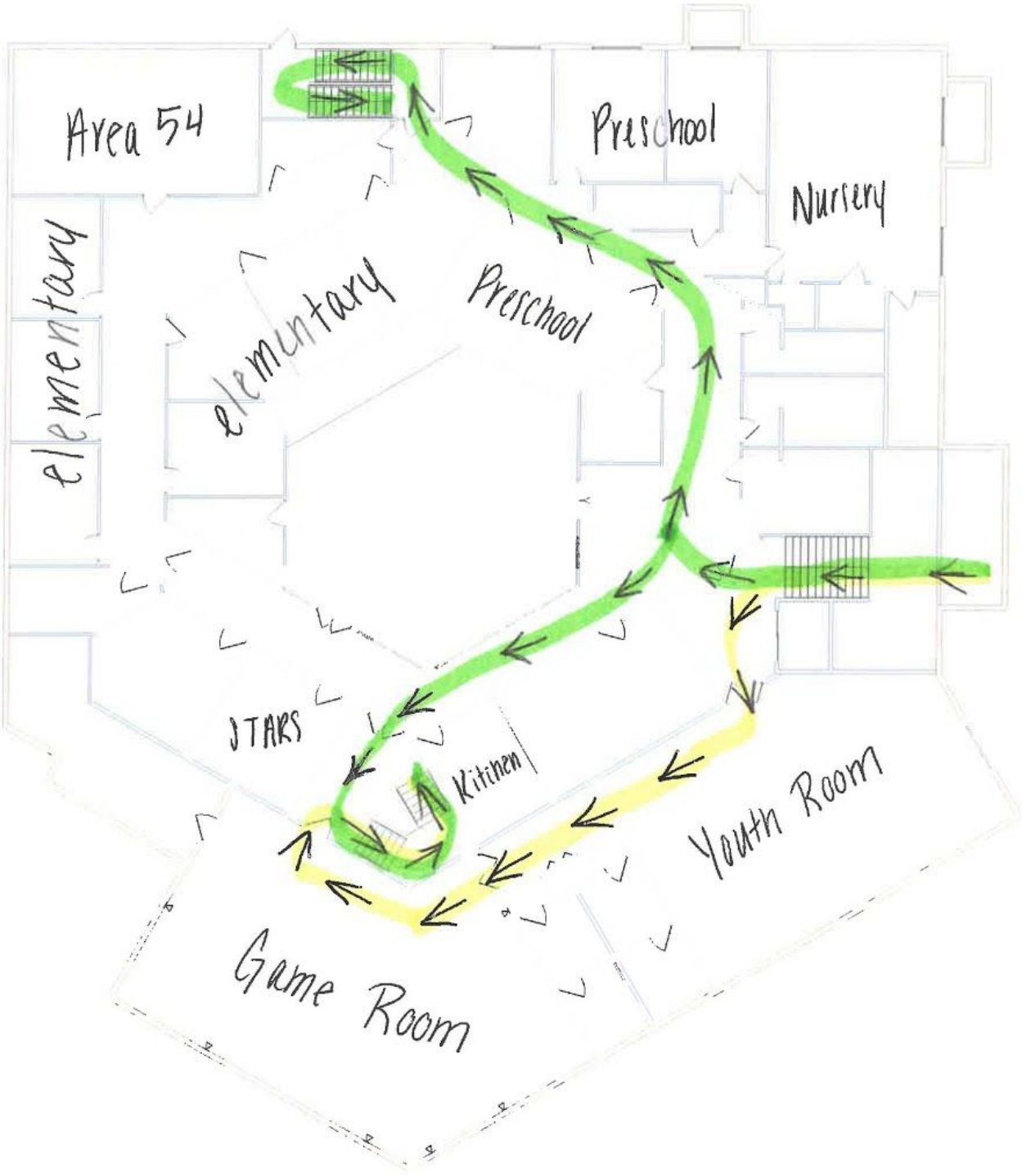
CHARITY LUTHERAN CHURCH COVID-19 YOUTH & CHILDREN'S RE-OPENING PLAN

TRAFFIC FLOW MAP - UPPER LEVEL
(GREEN - NURSERY/PREK/ELEMENTARY YELLOW - MS/HS)



CHARITY LUTHERAN CHURCH COVID-19 YOUTH & CHILDREN'S RE-OPENING PLAN

TRAFFIC FLOW MAP - LOWER LEVEL
(GREEN - NURSERY/PREK/ELEMENTARY YELLOW - MS/HS)



CHARITY LUTHERAN CHURCH

COVID-19 YOUTH & CHILDREN'S RE-OPENING PLAN

CHILDREN'S MINISTRY

(Nursery, Preschool, & Elementary)

Child Check In Procedures

- Check in will begin no more than 15 minutes prior to class start times.
- All students and parents will enter through the main children's wing doors. **(If possible, please send only one adult per family to check-in to reduce the number of people in close proximity. Families are also asked to observe 6 feet of social distancing from one another whenever possible.)**
- 2-4 volunteers will be stationed in the check-in area.
 - Volunteers will use iPads to check families in and print labels for them.
- **FAMILIES WITH NURSERY & PRESCHOOL STUDENTS ONLY:**
 - After checking in, go to the right to take your child to their classroom. Exit through the north staircase at the end of the preschool hallway.
- **FAMILIES WITH ELEMENTARY STUDENTS ONLY:**
 - After checking in, your students will enter the gazebo and stand in their class' area, which will be clearly marked. Exit through the doors near the kitchen to go upstairs.
- **FAMILIES WITH STUDENTS IN BOTH AREAS:**
 - After checking in, leave your elementary students at the gazebo and proceed to the right to drop your younger children off in their classrooms. Exit through the north staircase at the end of the preschool hallway.
- **NO PARENTS OR VISITORS WILL BE ALLOWED INTO CLASSROOMS, THE GAZEBO, OR THE ELEMENTARY HALLWAY UNLESS THEY ARE SERVING IN A VOLUNTEER CAPACITY.**

Classroom Procedures

- **Nursery**
 - Regular sanitizing will take place in the nursery, including toys and other surfaces.
- **Preschool**
 - Classrooms will have a 1:5 leader:child ratio.
 - Each child will have their own bag of supplies that will be used each week. These bags are labelled and will stay at church.
 - Large group (the lesson/worship) will be streamed into each classroom on TVs to reduce traffic and minimize exposure to large numbers of people.
- **Elementary**
 - Classrooms
 - Instead of traditional grade-level classrooms, students will be split into K-3 and 4-5 grade groups, with the goal of keeping family and friends who already have close contact with one another together.
 - Classrooms will have a 1:5 leader:child ratio.
 - Classrooms will have taped off areas for each child to maintain as much social distancing as possible.
 - Small Group Time

CHARITY LUTHERAN CHURCH

COVID-19 YOUTH & CHILDREN'S RE-OPENING PLAN

■

CHILDREN'S MINISTRY CONTINUED

(Nursery, Preschool, & Elementary)

■

- Each child will have their own bag of supplies that will be used each week. These bags are labelled and will stay at church.
- **Each child should bring their own Bible** as we will not be sharing community Bibles at this time.
- Large Group Time
 - Large group (the lesson/worship) will be streamed into each classroom on TVs to reduce traffic and minimize exposure to large numbers of people.

Child Check Out Procedures

- The children's wing doors will remain locked until class times are over.
- Traffic flow will remain the same as the drop-off traffic flow.
- All parents must enter through the main children's entrance with their guardian tag ready. **(If possible, please send only one adult per family to pick up children to minimize the number of people in the area at once.)**
 - **FAMILIES WITH NURSERY & PRESCHOOL STUDENTS ONLY:**
 - Enter through the main doors and go to the right to pick your child up from their classroom. Exit through the north staircase at the end of the preschool hallway.
 - **FAMILIES WITH ELEMENTARY STUDENTS ONLY:**
 - Enter through the main doors and go to the left. A volunteer will check your tag at the first door to the gazebo and bring your children to you. Exit through the doors near the kitchen to go upstairs.
 - **FAMILIES WITH STUDENTS IN BOTH AREAS:**
 - Stop at the gazebo entrance first to pick up your elementary children. Then proceed to the right to pick up your younger children. Exit through the north staircase at the end of the preschool hallway.
 - **PLEASE REMEMBER TO MAINTAIN A SOCIAL DISTANCE OF 6FT WHENEVER POSSIBLE.**
- **4th and 5th grade students will still be allowed to leave on their own to meet parents upstairs.** If they are picking up younger siblings, please leave the guardian tag with them.

CHARITY LUTHERAN CHURCH COVID-19 YOUTH & CHILDREN'S RE-OPENING PLAN

YOUTH MINISTRY (Middle School & High School)

Middle School

- Interactive Gathering Time
 - Students and families will gather in the sanctuary for interactive activities before the service begins.
- Service
 - The first 20 minutes of the WOW service will include a welcome, activity, worship song, 5 minute lesson lead-in, and dismissal for middle school students.
 - Students will sit **with their families** (*change from last year*) for the service. If a student does not have family members present at the service, there will be a reserved area up front for them.
- 20 Minute Rotations
 - Students will travel with their small groups through 3 rotations.
- Small Group Time
 - Small groups will meet in their designated areas and will be free to leave the building on their own.
- **Please follow all traffic flow signage - especially the one-way staircases.**

High School

- Connection Time
 - High schoolers will meet in the youth room for connection time and snacks. A parent snack sign up sheet will be sent out via email.
- Teaching, Activities, Small Groups, and Games will take place starting at 8 PM.

Details regarding the online option will be sent out by each area's director at a later time.